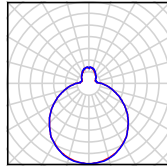


AURA LE 5,9



TECHNICAL DATA

| | |
|---|--|
| Light source | LED module Osmont L16B, L16C, L43C |
| Chromacity temperature | 3000K, 4000K |
| CRI | 3000K Ra>80, 4000K Ra>80 |
| Lifetime of LED | 50 000 hod / L80B10 (ambient temperature 25°C) |
| Power source | Tridonic |
| Photobiological safety of lamps by EN 62471 (Blue light hazard) | safe (Risk group – 0) |
| Energy class | A++ |
| Input voltage | 230V |
| IP | IP40 |
| Ambient temperature | from -20°C to +30°C |
| Warranty | 5 years |
| Pendant | 3 wires which are used as the power supply as well |
| Color | silver, black |
| Shade | three layers glass with matt surface |
| Shade attachment | with folding holders |
| Mounting | ceiling |
| Applications | residential and office spaces |

VARIANTS

LED:

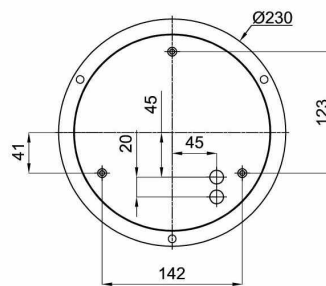
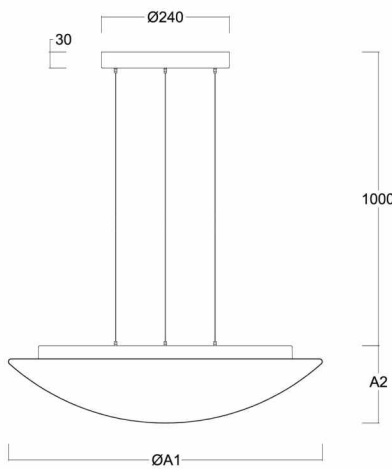
| | Type | Input [W] | Luminous flux LED [lm] | | Luminous flux of luminaire [lm] | | Possibility |
|----------|----------------------------------|-----------|------------------------|-------|---------------------------------|-------|-------------|
| | | | 3000K | 4000K | 3000K | 4000K | DIM (DALI) |
| AURA LE5 | LED-1L16C07ZLE11/082/L100 x .000 | 28 | 3690 | 3890 | 2550 | 2680 | • |
| | LED-1L16B07ZLE11/082/L100 x .000 | 36 | 4850 | 5070 | 3350 | 3500 | • |
| AURA LE9 | LED-2L43C07ZLE11/084/L100 x .000 | 37 | 5050 | 5330 | 3490 | 3680 | • |
| | LED-2L43C09ZLE11/084/L100 x .000 | 56 | 7250 | 7640 | 5000 | 5270 | • |

x – color (S – silver, C – black)
.000 – 3000K or 4000K

DIMENSIONS

DIMENSIONS OF LUMINAIRE [mm]:

MOUNTING DIMENSIONS [mm]:



| | ØA1 | A2 |
|----------|-----|-----|
| AURA LE5 | 490 | 135 |
| AURA LE9 | 590 | 145 |