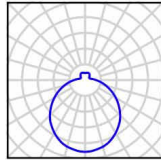


AURA P3,P4,P5



TECHNICAL DATA

| | | |
|-----------------------------------------------------------------|------------------------------------------------------|-------------------|
| Light source | LED module Osmont L14B, L14C, L15B, L15C, L16B, L16C | incandescent lamp |
| Chromacity temperature | 3000K, 4000K | by source |
| CRI | 3000K Ra>80, 4000K Ra>80 | by source |
| Lifetime of LED | 50 000 hod / L80B10 (ambient temperature 25°C) | by source |
| Power source | Tridonic | - |
| Photobiological safety of lamps by EN 62471 (Blue light hazard) | safe (Risk group – 0) | by source |
| Energy class | A++ | by source |
| Input voltage | 230V | |
| IP | IP 40 | |
| Ambient temperature | from -20°C to +30°C | |
| Warranty | 5 years | |
| Pendant | steel bar | |
| Color | white | |
| Shade | three layers glass with matt surface | |
| Shade attachment | with folding holders | |
| Mounting | ceiling | |
| Applications | residential and office spaces | |

| Type | Lenght [mm] |
|------|-------------|
| z1 | 200 |
| z2 | 400 |
| z3 | 600 |
| z4 | 800 |
| z5 | 1000 |

VARIANTS

LED:

| | Type | Input [W] | Luminous flux LED [lm] | | Luminous flux of luminaire [lm] | | Possibility |
|---------|-----------------------------|-----------|------------------------|-------|---------------------------------|-------|-------------|
| | | | 3000K | 4000K | 3000K | 4000K | DIM (DALI) |
| AURA P3 | LED-1L14C03ZK64/062/z. .000 | 15 | 2000 | 2110 | 1360 | 1430 | - |
| | LED-1L14B07ZK64/062/z. .000 | 20 | 2590 | 2700 | 1760 | 1840 | - |
| AURA P4 | LED-1L15C07ZK75/072/z. .000 | 21 | 2770 | 2920 | 2050 | 2160 | • |
| | LED-1L15B07ZK75/072/z. .000 | 29 | 3880 | 4050 | 2870 | 3000 | • |
| AURA P5 | LED-1L16C07ZK86/082/z. .000 | 28 | 3690 | 3890 | 2550 | 2680 | • |
| | LED-1L16B07ZK86/082/z. .000 | 36 | 4850 | 5070 | 3350 | 3500 | • |

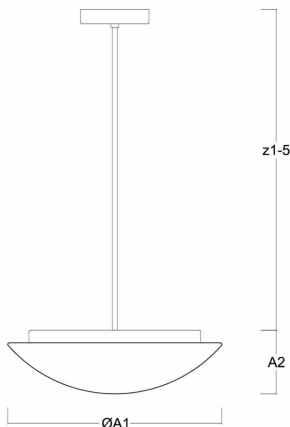
STANDARD:

| | Type | Input [W] | Socket |
|---------|------------------|-----------|--------|
| AURA P3 | IN-22ZK64/062/z. | 2x75 | 2xE27 |
| AURA P4 | IN-22ZK74/072/z. | 2x75 | 2xE27 |
| AURA P5 | IN-32ZK86/082/z. | 3x60 | 3xE27 |

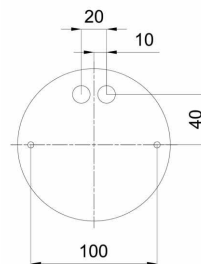
z. – pendant length
.000 – 3000K or 4000K

DIMENSIONS

DIMENSIONS OF LUMINAIRE [mm]:



MOUNTING DIMENSIONS [mm]:



| | ØA1 | A2 |
|---------|-----|-----|
| AURA P3 | 350 | 130 |
| AURA P4 | 420 | 135 |
| AURA P5 | 490 | 140 |