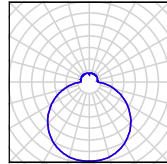
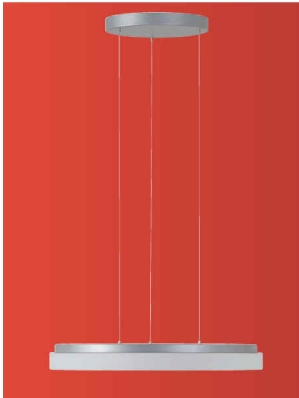


CARINA LE 1,2



TECHNICAL DATA

Light source	LED module Osmont L17C, L20C
Chromacity temperature	3000K, 4000K
CRI	3000K Ra>80, 4000K Ra>80
Lifetime of LED	50 000 hod / L80B10 (ambient temperature 25°C)
Power source	Tridonic
Photobiological safety of lamps by EN 62471 (Blue light hazard)	safe (Risk group – 0)
Energy class	A++
Input voltage	230V
IP	IP40
Ambient temperature	from -20°C to +30°C
Warranty	5 years
Pendant	3 wires which are used as the power supply as well
Color	white, silver, black
Shade	three layers glass with matt surface
Shade attachment	with folding holders
Mounting	ceiling
Applications	residential and office spaces

VARIANTS

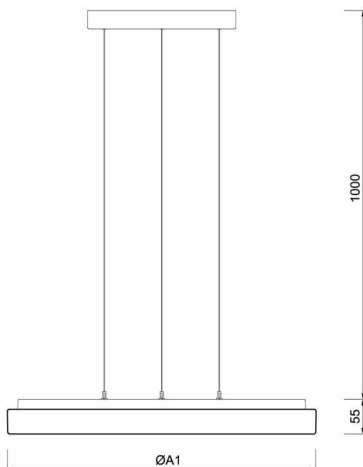
LED:

	Type	Input [W]	Luminous flux LED [lm]		Luminous flux of luminaire [lm]		Possibility DIM (DALI)
			3000K	4000K	3000K	4000K	
CARINA LE1	LED-1L17C07ZLE11/425/L100 x.000	25	3320	3500	2090	2210	•
CARINA LE2	LED-1L20C07ZLE11/426/L100 x.000	35	4750	5010	3090	3260	•
CARINA LE2	LED-1L20C10ZLE11/426/L100 x.000	50	6540	6890	4250	4480	•

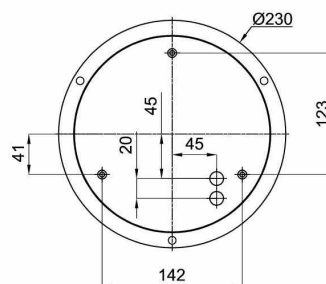
x – color (B – white, S – silver, C – black)
.000 – 3000K or 4000K

DIMENSIONS

DIMENSIONS OF LUMINAIRE [mm]:



MOUNTING DIMENSIONS [mm]:



	ØA1
CARINA LE1	375
CARINA LE2	500