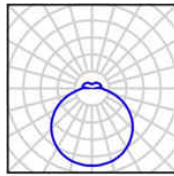


## DELIA LE 2,3 PC/PM, LEC 2,3 PC/PM



DELIA LEC  
decorative stripe – black matt

### TECHNICAL DATA

|   |  |
|---|--|
| Light source  | LED module Osmont L16B, L16C, L20C                         |
| Chromacity temperature  | 3000K, 4000K   |
| CRI   | 3000K Ra>80, 4000K Ra>80                                   |
| Lifetime of LED   | 50 000 hod / L80B10 (ambient temperature 25°C)             |
| Power source  | Tridonic   |
| Photobiological safety of lamps by EN 62471 (Blue light hazard) | safe (Risk group – 0)                                      |
| Energy class  | A++  |
| Input voltage   | 230V   |
| IP  | IP40   |
| Ambient temperature   | from -20°C to +30°C  |
| Warranty  | 5 years  |
| Pendant   | 3 wires which are used as the power supply as well         |
| Color   | white  |
| Shade   | opal polycarbonate (PC) or opal polymethylmetacrylate (PM) |
| Shade attachment  | with folding holders                                       |
| Mounting  | ceiling  |
| Applications  | residential and office spaces                              |

### VARIANTS

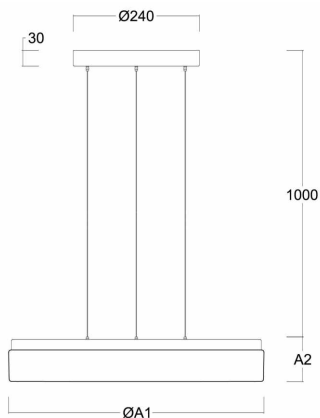
LED:

|               | Type                            | Input [W] | Luminous flux LED [lm] |       | Luminous flux of luminaire [lm] |       | Possibility<br>DIM (DALI) |
|---------------|---------------------------------|-----------|------------------------|-------|---------------------------------|-------|---------------------------|
|               |                                 |           | 3000K                  | 4000K | 3000K                           | 4000K |                           |
| DELIA LE2 PC  | LED-1L16C07ZLE11/PC23/L100.000  | 28        | 3690                   | 3890  | 2580                            | 2720  | •                         |
|               | LED-1L16B07ZLE11/PC23/L100.000  | 36        | 4850                   | 5070  | 3400                            | 3550  | •                         |
| DELIA LEC2 PC | LED-1L16C07ZLE11/PC23C/L100.000 | 28        | 3690                   | 3890  | 2030                            | 2140  | •                         |
|               | LED-1L16B07ZLE11/PC23C/L100.000 | 36        | 4850                   | 5070  | 2670                            | 2790  | •                         |
| DELIA LE2 PM  | LED-1L16C07ZLE11/PM23/L100.000  | 28        | 3690                   | 3890  | 2580                            | 2720  | •                         |
|               | LED-1L16B07ZLE11/PM23/L100.000  | 36        | 4850                   | 5070  | 3400                            | 3550  | •                         |
| DELIA LEC2 PM | LED-1L16C07ZLE11/PM23C/L100.000 | 28        | 3690                   | 3890  | 2030                            | 2140  | •                         |
|               | LED-1L16B07ZLE11/PM23C/L100.000 | 36        | 4850                   | 5070  | 2670                            | 2790  | •                         |
| DELIA LE3 PC  | LED-1L20C07ZLE11/PC24/L100.000  | 35        | 4750                   | 5010  | 3140                            | 3310  | •                         |
|               | LED-1L20C10ZLE11/PC24/L100.000  | 53        | 6780                   | 7150  | 4470                            | 4720  | •                         |
| DELIA LEC3 PC | LED-1L20C07ZLE11/PC24C/L100.000 | 35        | 4750                   | 5010  | 2610                            | 2760  | •                         |
|               | LED-1L20C10ZLE11/PC24C/L100.000 | 53        | 6780                   | 7150  | 3600                            | 3790  | •                         |
| DELIA LE3 PM  | LED-1L20C07ZLE11/PM24/L100.000  | 35        | 4750                   | 5010  | 3140                            | 3310  | •                         |
|               | LED-1L20C10ZLE11/PM24/L100.000  | 53        | 6780                   | 7150  | 4470                            | 4720  | •                         |
| DELIA LEC3 PM | LED-1L20C07ZLE11/PM24C/L100.000 | 35        | 4750                   | 5010  | 2610                            | 2760  | •                         |
|               | LED-1L20C10ZLE11/PM24C/L100.000 | 53        | 6780                   | 7150  | 3600                            | 3790  | •                         |

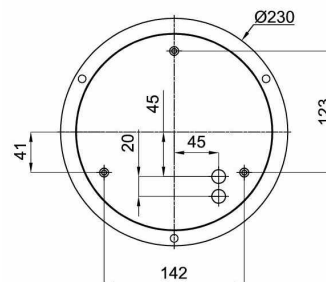
.000 – 3000K or 4000K

### DIMENSIONS

DIMENSIONS OF LUMINAIRE [mm]:



MOUNTING DIMENSIONS [mm]:



|                 | ØA1 | A2 |
|-----------------|-----|----|
| DELIA LE2, LEC2 | 400 | 80 |
| DELIA LE3, LEC3 | 500 | 85 |