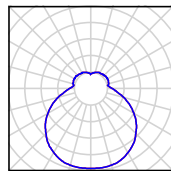
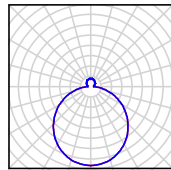


ERIS LE2,3,4



ERIS LEC2,3,4



TECHNICAL DATA

Light source	LED module Osmont L14B, L14C, L16B, L16C, L43C
Chromaticity temperature	3000K, 4000K
CRI	3000K Ra>80, 4000K Ra>80
Lifetime of LED	50 000 hod / L80B10 (ambient temperature 25°C)
Power source	Tridonic
Photobiological safety of lamps by EN 62471 (Blue light hazard)	safe (Risk group – 0)
Energy class	A++
Input voltage	230V
IP	IP40
Ambient temperature	from -20°C to +30°C
Warranty	5 years
Pendant	3 wires which are used as the power supply as well
Color	white, silver, black
Shade	three layers glass with matt surface ERIS LECx – painted decorative stripe
Shade attachment	with folding holders
Mounting	ceiling
Applications	residential and office spaces

VARIANTS

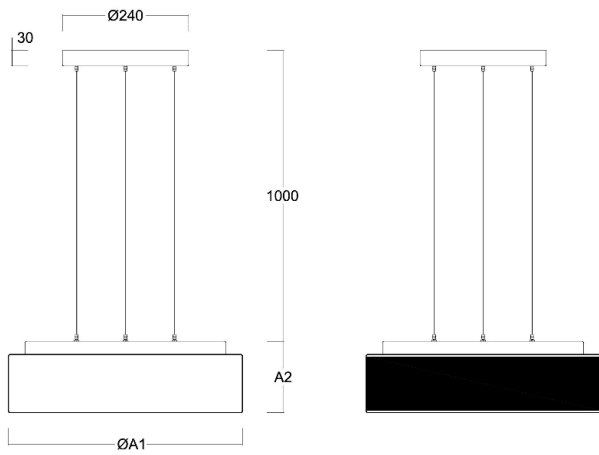
LED:

	Type	Input [W]	Luminous flux LED [lm]		Luminous flux of luminaire [lm]		Possibility DIM (DALI)
			3000K	4000K	3000K	4000K	
ERIS LE2	LED-1L14C03ZLE11/412/L100 x .000	15	2000	2110	1360	1430	•
	LED-1L14B07ZLE11/412/L100 x .000	20	2590	2700	1760	1840	•
ERIS LEC2	LED-1L14C03ZLE11/412C/L100 x .000	15	2000	2110	740	960	•
	LED-1L14B07ZLE11/412C/L100 x .000	20	2590	2700	780	1000	•
ERIS LE3	LED-1L16C07ZLE11/413/L100 x .000	28	3690	3890	2440	2570	•
	LED-1L16B07ZLE11/413/L100 x .000	36	4850	5070	3200	3350	•
ERIS LEC3	LED-1L16C07ZLE11/413C/L100 x .000	28	3690	3890	1290	1700	•
	LED-1L16B07ZLE11/413C/L100 x .000	36	4850	5070	1360	1780	•
ERIS LE4	LED-2L43C07ZLE11/414/L100 x .000	37	5050	5330	3330	3520	•
	LED-2L43C09ZLE11/414/L100 x .000	50	6620	6980	4370	4610	•
ERIS LEC4	LED-2L43C07ZLE11/414C/L100 x .000	37	5050	5330	1770	1870	•
	LED-2L43C09ZLE11/414C/L100 x .000	50	6620	6980	2320	2440	•

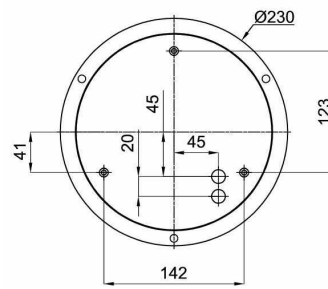
x – color (B – white, S – silver, C – black)
.000 – 3000K or 4000K

DIMENSIONS

DIMENSIONS OF LUMINAIRE [mm]:



MOUNTING DIMENSIONS [mm]:



	ØA1	A2
ERIS LE2, LEC2	340	125
ERIS LE3, LEC3	445	135
ERIS LE4, LEC4	540	145