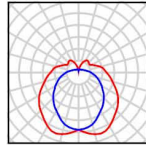


NEVA 1,2



TECHNICAL DATA

Light source	LED module Osmont L26B, L27C	incandescent lamp
Chromacity temperature	3000K, 4000K	by source
CRI	3000K Ra>80, 4000K Ra>80	by source
Power source	Tridonic	-
Lifetime of LED	50 000 hod / L80B10 (ambient temperature 25°C)	by source
Energy class	A++	by source
Photobiological safety of lamps by EN 62471 (Blue light hazard)	safe (Risk group – 0)	by source
Input voltage	230V	
IP	IP43	
Ambient temperature	from -20°C to +30°C	
Warranty	5 years	
Fixture	metal	
Color of fixture	white	
Shade	three layers glass with matt surface	
Shade attachment	with folding holders	
Mounting	wall, ceiling	
Applications	housing constructions (rooms, corridors)	

VARIANTS

LED:

	Type	Input [W]	Luminous flux LED [lm]		Luminous flux of luminaire [lm]	
			3000K	4000K	3000K	4000K
NEVA 1	LED-1L26B07U8/226.000	8	970	1010	660	690
NEVA 2	LED-2L27C03U9/228.000	17	2120	2240	1630	1720

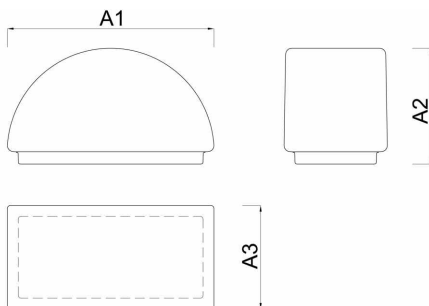
.000 – 3000K or 4000K

STANDARD:

	Type	Input [W]	Socket	Possibility
				Sensor (HF)
NEVA 1	IN-12U8/226	60	E27	-
	IN-12U9/228	100	E27	• (1x75W)
NEVA 2	IN-22U9/228	2x60	2xE27	-

DIMENSIONS

DIMENSIONS OF LUMINAIRE [mm]:



	A1	A2	A3
NEVA 1	240	120	145
NEVA 2	340	170	195

MOUNTING DIMENSIONS [mm]:

<p>NEVA 1</p>	
<p>NEVA 2</p>	