

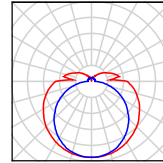
SYLVIA 1A,1



SYLVIA 1A



SYLVIA 1



TECHNICAL DATA

Light source	LED module Osmont L28C, L25B	incandescent lamp
Chromacity temperature	3000K, 4000K	by source
CRI	3000K Ra>80, 4000K Ra>80	by source
Lifetime of LED	50 000 hod / L80B10 (ambient temperature 25°C)	-
Power source	Tridonic	by source
Photobiological safety of lamps by EN 62471 (Blue light hazard)	safe (Risk group – 0)	by source
Energy class	A++	by source
Input voltage	230V	
IP	IP44	
Ambient temperature	from -20°C to +30°C	
Warranty	5 years	
Fixture	metal	
Color of fixture	white	
Class II	LED	
Shade	three layers glass with matt surface	
Shade attachment	with folding holders	
Mounting	wall, ceiling	
Applications	housing constructions (rooms, corridors), cultural premises	

VARIANTS

LED:

	Type	Input [W]	Luminous flux LED [lm]		Luminous flux of luminaire [lm]	
			3000K	4000K	3000K	4000K
SYLVIA 1A	LED-1L28C03U11/131 .000	11	1380	1460	900	950
SYLVIA 1	LED-2L25B07U12/129 .000	21	2590	2700	1680	1760

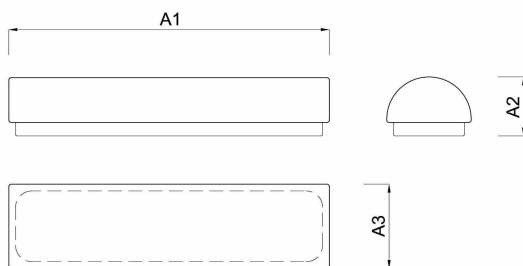
.000 – 3000K or 4000K

STANDARD:

	Type	Input [W]	Socket
SYLVIA 1A	IN-22U11/131	2x28	2xE14
SYLVIA 1	IN-32U12/129	3x28	3xE14

DIMENSIONS

DIMENSIONS OF LUMINAIRE [mm]:



	A1	A2	A3
SYLVIA 1A	380	75	105
SYLVIA 1	610	75	105

MOUNTING DIMENSIONS [mm]:

