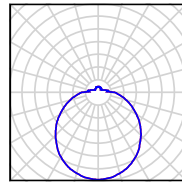


# TITAN LE 2,3 PC/PM



## TECHNICAL DATA

Light source	LED module Osmont L16B, L16C, L43C
Chromaticity temperature	3000K, 4000K
CRI	3000K Ra>80, 4000K Ra>80
Lifetime of LED	50 000 hod / L80B10 (ambient temperature 25°C)
Power source	Tridonic
Photobiological safety of lamps by EN 62471 (Blue light hazard)	safe (Risk group – 0)
Energy class	A++
Input voltage	230V
IP	IP40
Ambient temperature	from -20°C to +30°C
Warranty	5 years
Pendant	3 wires which are used as the power supply as well
Color	white
Shade	opal polycarbonate (PC) or opal polymethylmetacrylate (PM)
Shade attachment	with folding holders
Mounting	ceiling
Applications	residential and office spaces

## VARIANTS

LED:

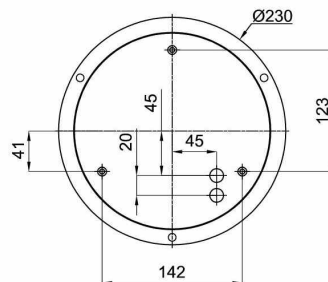
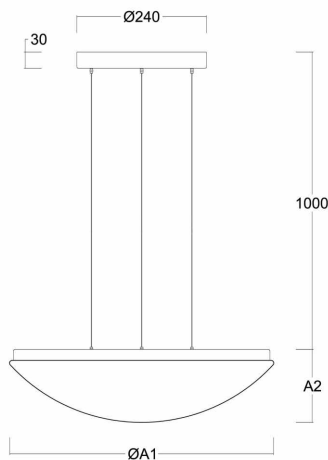
	Type	Input [W]	Luminous flux LED [lm]		Luminous flux of luminaire [lm]		Possibility DIM (DALI)
			3000K	4000K	3000K	4000K	
TITAN LE2 PC	LED-1L16C07ZLE11/PC08/L100.000	28	3690	3890	2440	2570	•
	LED-1L16B07ZLE11/PC08/L100.000	36	4850	5070	3200	3350	•
TITAN LE2 PM	LED-1L16C07ZLE11/PM08/L100.000	28	3690	3890	2550	2680	•
	LED-1L16B07ZLE11/PM08/L100.000	36	4850	5070	3200	3500	•
TITAN LE3 PC	LED-2L43C07ZLE11/PC09/L100.000	37	5050	5330	3330	3520	•
	LED-2L43C10ZLE11/PC09/L100.000	56	7250	7640	4790	5050	•
TITAN LE3 PM	LED-2L43C07ZLE11/PM09/L100.000	37	5050	5330	3490	3680	•
	LED-2L43C10ZLE11/PM09/L100.000	56	7250	7640	5000	5270	•

.000 – 3000K or 4000K

## DIMENSIONS

DIMENSIONS OF LUMINAIRE [mm]:

MOUNTING DIMENSIONS [mm]:



	ØA1	A2
TITAN LE2	400	120
TITAN LE3	500	135